**Level:** Intermediate**Works with:** Lotus Workflow and Domino.Doc**Updated:** 02-Dec-2002

by  
Luciano Resende  
and [Tara Hall](#)

Fred and Ginger, peanut butter and jelly, Lotus Workflow and Domino.Doc—what do they all have in common? They belong together. Lotus Workflow and Domino.Doc complement each other by extending each system's functionality. Domino.Doc's content management is enhanced by the workflow management provided by Lotus Workflow, so you can use Domino.Doc to store documents and use Lotus Workflow to manage processes (such as document approval) for these documents. In Lotus Workflow 3.0, you can also now create new documents that you store in Domino.Doc. Integration of the two systems is simple, requiring little or no programming, depending on the level of customization.

In this article, we describe how to use the Lotus Workflow 3.0 automated activities to improve performance between Lotus Workflow and Domino.Doc. We also describe the New Document feature in Domino.Doc that lets you create documents in Domino.Doc using Lotus Workflow, and we provide updated examples of Lotus Workflow and Domino.Doc integration using the Lotus Workflow Architect. This article is intended for Lotus Workflow and Domino.Doc system administrators and Lotus Workflow process designers. The examples in this article work with Lotus Workflow 3.0 or later and Domino.Doc 2.5a or later.

## How to configure Lotus Workflow and Domino.Doc integration

Before you can integrate the two products, you must set up the Domino.Doc and Lotus Workflow environments. Install both Domino.Doc and Lotus Workflow on the same server. The server platform must be Windows32. The topic of installation is an article in itself, so we won't be covering it here. However, you can find installation and configuration help for each product in the Lotus Workflow Installation and Administration Guide and in the Domino.Doc Installation and Administrator's Guides. We also recommend that you refer to the "Installation considerations" chapter in the Domino.Doc and Lotus Workflow Integration Guide. You can find all of these guides and more in the [Documentation Library](#).

After you set up each system, you are ready to get started, so let's begin with the documents that you need to integrate the two systems: Access Profiles and Application Setup documents.

### Domino.Doc Access Profiles

As mentioned earlier, integration of Domino.Doc and Lotus Workflow requires little or no programming—depending on the level of integration you want to achieve. The more you integrate the two products, the more programming is required. The Domino.Doc API lets you integrate back-end features like check-in, check-out, search, and archive with Lotus Workflow, but for front-end features like launching or viewing a document from Domino.Doc, you don't need the API. Integration of the back-end features requires access information—user account name and password—from the Lotus Workflow application. To use the automated activities described later in this article, we use the Domino.Doc API, so you need an Access Profile.

You can create Domino.Doc Access Profiles in Lotus Workflow. The Lotus Workflow Application Setup document lets you manage your Access Profiles. Domino.Doc uses a reader field to determine who can read or edit an Access Profile, so assigning the proper role to each user in the Access Profiles is critical. The following table describes the roles available to you.

Role	Assigned to...	Description
[Process Server]	Domino.Doc and Lotus Workflow servers and agent signers	This role provides a high level of security. Any one assigned this role can read the Access Profile.
[Process Reader]	Users	This role provides a low level of security. Like the [Process Server] role, any one assigned this role can read the Access Profiles. Assign this role to your Lotus Workflow users.

In addition to these roles, you need to setup the appropriate ACL for your Lotus Workflow application. For more information about ACL settings, see the [Lotus Workflow Administrator's Guide](#) for your release.

### Creating a Domino.Doc Access Profile

The Lotus Workflow Application Setup Document contains all the global parameters you need to integrate Lotus Workflow applications with Domino.Doc. The Domino.Doc Access Profile provides information about the URL for the Domino.Doc library to be used and the user name and password used to access Domino.Doc documents.

To create the Domino.Doc Access Profile in the Lotus Workflow application, follow these steps:

1. Open the Lotus Workflow application database for which you want to provide integration.
2. Open or create the Application Setup document by choosing Administration - Application Setup. (If the Application Setup document doesn't already exist, a new one will be created.)
3. Click Edit Document, then select the Domino.Doc Integration Setup tab.
4. If you want to create a new Access Profile, click New. If you want to edit an existing profile, select the profile from the list of existing profiles, then click Open.

The screenshot shows the 'Application Setup Document' with the 'Domino.Doc Integration Setup' tab selected. The 'Application Owner' is 'Luciano Resende/Westford/IBM'. The 'Domino.Doc Access Profiles' section contains a list box with 'Open', 'New', and 'Delete' buttons. A 'Refresh List' button is below the list box. The 'Default access profile' section has a text field for 'What is the filepath or Replica ID of the library database?' and a 'Location' button. At the bottom, there is a link to 'Settings for Lotus Workflow agents for Domino.Doc integration'.

5. Complete the fields of the Domino.Doc Access Profile, then save and close it.

**NOTE** When you specify the URL for the Domino.Doc library, do not use the ?OpenDatabase URL command. Otherwise, when you try to access that URL, you receive an error.

6. In the Lotus Workflow Application Setup document, click Refresh List to see the new profile.
7. Specify the replica ID for the Domino.Doc library to be used. Click Location to search for the Domino.Doc library.
8. When done, save and close the Application Setup document.

Depending on your environment, you may need to create more than one Access Profile documents. If you have more than one profile, you can specify which profile to use for each type of action you perform in Domino.Doc

when you design your Lotus Workflow process.

For more detailed information about creating Domino.Doc Access profiles, see the [Lotus Workflow Administration Guide](#) for your release.

If you want to use Lotus Workflow agents to integrate Lotus Workflow and Domino.Doc, configure the "Settings for Lotus Workflow agents for Domino.Doc integration" section on the Domino.Doc Integration Setup tab. Because we focus on the new way of integrating Lotus Workflow and Domino.Doc in this article, we won't go into details about that section. For more information about how to use those agents to integrate Lotus Workflow and Domino.Doc, refer to the Domino.Doc and Lotus Workflow Integration Guide available in the [Documentation Library](#).

If your Domino.Doc library uses event-based initiation, enable Advanced initiation in the Lotus Workflow Application Setup Document. For instructions on how to enable Advanced initiation, see the Domino.Doc and Lotus Workflow Integration Guide.

### **Domino.Doc configuration**

After you configure Lotus Workflow, you can complete the integration of Domino.Doc and Lotus Workflow by configuring Domino.Doc.

First, install the Domino.Doc Desktop Enabler. Note that the Desktop Enabler runs only on a Windows32 platform. The Desktop Enabler lets users access documents in Domino.Doc from the appropriate authoring tools. For instance, you can access a WordPro file in Domino.Doc from Lotus WordPro. Integration like this uses the Domino.Doc API. To integrate Domino.Doc and Lotus Workflow, you must install the Domino.Doc Desktop Enabler on all Lotus Workflow servers. The Desktop Enabler makes the Domino.Doc API available to the Lotus Workflow servers.

### **Domino.Doc document types**

In Domino.Doc, document types are used to identify documents. For instance, you can specify a document type of memo and apply that type to all documents fitting your description of memo. For each document type, there are attributes. For our memo document type, we might have attributes such as date, to, from, and so on. You can specify attributes for each document type. To help you get started, Domino.Doc ships with some predefined document types. We use the DWF Client Correspondence and DWF Expense Report types in our Lotus Workflow Samples, which you can download from the [Sandbox](#).

When you integrate Lotus Workflow and Domino.Doc, you can use document types to specify workflow options. You can specify your workflow options in the Workflow Options section of the document type configuration associated with each document. You can access the document types configuration section by accessing the Library Administration in the Domino.Doc library. For our purposes, the most important information that you specify in the Workflow Options section is:

- The location of the workflow application (replica ID or the file path of the Lotus Workflow application to be used by Domino.Doc)
- The process used to initiate a Lotus Workflow job
- The type of initiation used by Domino.Doc to create Workflow jobs (event-based or interactive initiation)

### ***Event-based initiation***

With event-based initiation, you specify the event that triggers a new Workflow process. Domino.Doc provides predefined events for you to choose from. Those events are applied to all documents of a certain document type. The Workflow process is automatic, but the initiation is not instantaneous. A background agent scheduled for the Workflow application begins the Workflow process.

### ***Interactive initiation***

Interactive initiation is triggered by the user (that is, the user determines when to initiate the workflow). To initiate the workflow, the user opens the Workflow tab of a document and selects a process from a list. The Workflow process begins immediately.

As the Domino.Doc Library Administrator, you can determine which processes are available for a specified document type. The following screen shows the settings available in the Workflow Options section.

The screenshot shows the 'Workflow Options' dialog box with the 'General Settings' tab selected. The settings are as follows:

- Specify location of workflow application:** ☒ by replica ID. Replica ID: 85256877:006CFB23
- Interactive Initiation:** Can users initiate a new workflow process interactively? ☐ Yes ☒ No
- Event based Initiation:** Automatically initiate a workflow process upon the following event:
  - ☐ Never
  - ☒ First document check in
  - ☐ Approval cycle completion
  - ☐ Review completion
  - ☐ Addition to specified binder(s)
- Which process should be initiated upon this event?** (Expense Report (Domino.Doc integration required))
- Shared Parameters:**
  - What is the default workflow job name?** ☒ Document Title, ☐ Username & Date, ☐ Content of selected field
  - What is the default priority?** 2: Medium
  - As what type of document are the reference to Domino.Doc documents added?** ☒ As Main Documents, ☐ As Binder Documents
  - Which profile fields should be transferred to the reference document?** ☐ No fields, ☒ All fields, ☐ Selected field(s)

## New Domino.Doc and Lotus Workflow integration

In Lotus Workflow 2.1.1 and earlier, you used predefined Automated Activities agents to integrate Lotus Workflow and Domino.Doc. You can continue using these agents to integrate Domino.Doc and Lotus Workflow 3.0 and later, but these agents caused performance issues for two reasons:

- All automated activities are agents, and the Agent Manager must create the environment to run any agent.
- The agents must perform a database search to find the Workflow processes that require processing.

Lotus Workflow 3.0 and later introduced the Script Library Automated Activities to replace the Automated Activities agents, although Lotus Workflow 3.0 and later continue to support those agents. To support the Script Library Automated Activities, the code to integrate Lotus Workflow and Domino.Doc was rewritten. As a result, performance improved because the Agent Manager is not used to prepare, load, and run the agent. Also, the Workflow processes are passed as parameters to the automated activity object, so searching the database is no longer necessary. In addition, Domino caches the Script Libraries, so they run faster.

The new integration capabilities change the Lotus Workflow configuration. We explain those changes in the following sections.

### The Lotus Workflow Architect new Custom Action interface

The Lotus Workflow 3.0 Architect introduced the concept of Custom Actions, which are extensions of Automated Activities. Custom Actions let you use any predefined action that has been determined externally, such as through the Notes client. Custom Actions provide you with a more flexible interface with which to integrate Domino.Doc and Lotus Workflow. From the Lotus Workflow Architect, you can:

- Select a predefined action (in addition to the standard actions like mail, agents, and so on)
- Modify the action's parameters
- Input Help for all parameter types
- Save the action and parameters to the Process Definition

Custom Actions are defined in your INI files by adding the parameter type=CustomActions. The following table

lists the conventions and rules used to create a Custom Action INI file:

Key	Required	Value / comment
[Info]		
Type	yes	The value CustomActions indicates that this ini file contains CustomActions.
[Action 1]		
InternalName	yes	InternalActionName
DisplayName	no	Values include DisplayActionName or %GlossaryID or both. The default is InternalName. Use the following formats: DisplayName=Name DisplayName=%GlossaryID DisplayName=Name#%GlossaryID
ObjectType	no	Only AutomatedActivity is allowed. This is the default.
Category	no	CategoryName
Description	no	Values include ActionDescription or %GlossaryID or both. Use the same format use by DisplayName.
Platform	no	The default is Notes.
Type	yes	Agent/Script
ScriptLibraryName	if "Script"	Name of the ScriptLibrary
ScriptLibraryClass	if "Script"	Name of the ScriptLibraryClass
AgentName	if "Agent"	Name of the Agent
Parameter 1 ...		
Param_1_InternalName	yes	InternalParameterName
Param_1_DisplayName	yes	Values include DisplayParameterName or %GlossaryID or both. Use the same format used for DisplayName.
Param_1_Type	no	You can specify String/Formula/Number/BO/FieldName/NotesDB/Keywords/Keywords+ allows user input. The default is String.
Param_1_Keywords	if keywords	You can list internal keywords separated by a comma.
Param_1_DisplayKeywords	if keywords	You can list display keywords or %GlossaryIDs or both. Use the same format used by DisplayName. Separate keywords with a comma. For example: Param_1_DisplayKeywords=yes,no Param_1_DisplayKeywords=%5001,%5002 Param_1_DisplayKeywords=yes#%5001,no#%5002
Param_1_DefaultValue	no	DefaultValue
Param_1_SaveTo	no	The value is NotesField in this case. The default is the InternalName.
Param_1_Description	no	Values include ParameterDescription or %GlossaryID or both. Use the same format used by DisplayName.
Param_1_Required	no	Values are yes or no. The default is yes.
Param_1_InputHelp	no	Values include OpenFileDialog, OpenDatabaseDialog, BOLibrary, and any value needed to provide input help like BOLibrary, Browse button, list of BOs, and so on.
Param_1_InputHelpParam	no	This parameter may contain specific parameters that

s		depend on the InputHelp provided, such as type info for BOLibrary.
Param_1_MultiValue	no	Values are yes or no. The default is no.

Here is an example of a Custom Actions ini file. We added the following code to the domdoc.ini:

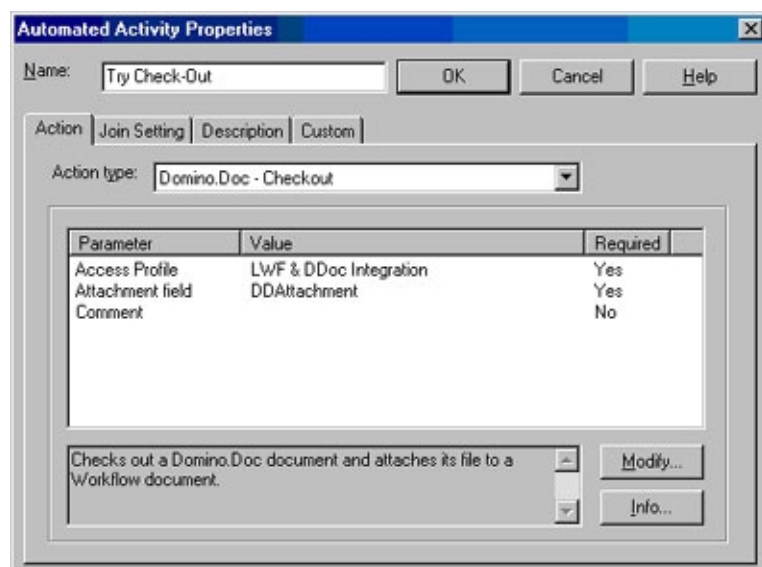
```
[Info]
Type=CustomActions

;=== Action 1 =====

[Action 1]
InternalName=DDCheckout
DisplayName=Domino.Doc - Checkout#%6656
Category=Domino.Doc
Description=Checks out a Domino.Doc document and attaches its file to a workflow document.#%6657
Type=Script
Platform=Notes
ScriptLibraryName=OS Domino.Doc Integration
ScriptLibraryClass=DominoDocIntegration

Param_1_InternalName=DDAccessProfile
Param_1_DisplayName=Access Profile#%6623
Param_1_Type=BO
Param_1_DefaultValue=
Param_1_SaveTo=DDProfileOS
Param_1_Description=AccessProfile used for accessing the Domino.Doc library. The Access Profile contains
username and password information required for log-in into Domino.Doc.#%6624
Param_1_Required=yes
Param_1_InputHelp=
Param_1_InputHelpParams=DominoDocAccessProfile
```

The following screen shows the Automated Activity Properties box. This box reflects the changes made to the previous domdoc.ini file. For instance, the Action type field lists the value specified in the DisplayName parameter. Other parameters and their values are listed in the window below the Action type field.



## Lotus Workflow action types for Domino.Doc integration

As we mentioned earlier, you can check in, check out, archive, and search for documents in Domino.Doc using



Lotus Workflow. These actions are predefined, so you can set these actions in the Lotus Workflow Architect. The following sections describe how to set up each of these predefined actions.

### Domino.Doc search

You can use Domino.Doc search to create Workflow processes that look for documents associated with a Workflow process. Before Lotus Workflow 3.0, you used the following fields on the OS DD Search Setup subform to configure a search:

Field name	Value Range	Functionality
DDSearchExecute	yes, fixed value	This field flags a search request. The DD Search Agent looks for the first document with DDSearchExecute=Yes.
DDSearchCriterion	Text. Must be a valid full text search criterion.	This field contains the search query to be executed by the DD Search Agent. Use a computed field to compute the query. The query is dependent on the computed field values, for example: "FIELD Customer_Name = \" + Customer_Name+\""
DDSearchMaxDocs	number	This field limits the number of search results. To return all search results, set the field to 0.

Lotus Workflow 3.0 still supports the existing fields DDSearchmaxDocs and DDSearchExecute; however, the fields must appear in the main document.

### Configuring Domino.Doc search

Follow these steps to configure your search in the Lotus Workflow Architect.

1. Open the Lotus Workflow Architect.
2. Select the Search automated activity, then right-click it.
3. Choose Properties from the pop-up menu.
4. On the Action tab, specify a value for the parameters described in the following table.

Parameter	Value description
Access Profile	Specifies the Access Profile for accessing the Domino.Doc library.
File Cabinet	Specifies a formula that evaluates to the name of a Domino.Doc File Cabinet. If a formula is specified, the search is restricted to this Domino.Doc File Cabinet. If you do not specify a value for this parameter, you can search the entire Domino.Doc library.
Search Query	Specifies a formula that evaluates the search string used to search Domino.Doc. For more flexibility, specify a field name instead of a formula. For instance, search queries conducted by the automated activity agents are available in the DDSearchCriterion field. If you are upgrading your Workflow application and want the same functionality available in Lotus Workflow 2.1, specify DDSeachCriterion for this parameter.
Search Report	Specifies whether the search results are added to the Workflow binder as a new document or to the main document.
Form for Search Report	Specifies the form used for the new binder document containing the search report. This parameter applies only if the Search Report is generated in a new binder document. The default value is DDSearchResult. If you do not specify a form, Domino.Doc defaults to the OS DD Search Report form.

5. Click OK when done.

The search results form may be unable to support large number of search results, so it's a good idea to limit the maximum number of results. The maximum number of results varies, but use the search query to limit the number of search results rather than a parameter.

### Domino.Doc archive

Another way in which you can integrate Domino.Doc and Lotus Workflow is to use Domino.Doc to archive Lotus Workflow processes. Domino.Doc's archive feature automatically archives Lotus Workflow processes in a Domino.Doc File Cabinet. From the Domino.Doc File Cabinet, you can recreate any document that was part of a Workflow process.

### Configuring the Domino.Doc archive

Follow these steps to configure the Domino.Doc archive from the Lotus Workflow Architect.

1. Open the Lotus Workflow Architect.
2. Select the Archive automated activity, then right-click.
3. Select Properties to open the Automated Activity Properties box.
4. On the Action tab, specify a value for the parameters described in the following table.

Parameter	Value description
Access Profile	Specify the Access Profile for accessing the Domino.Doc library.
File Cabinet	Specify the formula to evaluate to the name of Domino.Doc File Cabinet. This is the File Cabinet that archives the Workflow process documents.
Archive Option	Determine whether each Workflow binder is archived either as a separate Domino.Doc Binder or as a collection of Domino.Doc documents in a single Domino.Doc Binder. If you select the Use one Binder for all jobs option, you can set up the Domino.Doc Binder to use a dedicated view that maintains the same structure used in the Workflow application.
Binder	Specify a formula that evaluates to the name of the Domino.Doc Binder that archives the Workflow Binder. This parameter applies if you select the Use one Binder for all jobs option for the previous parameter.

5. Click OK when done.

### Domino.Doc Check-out

You can check out Domino.Doc documents from Lotus Workflow by configuring the check out activity in the Lotus Workflow Architect. If you have more than one Workflow application checking out the same documents, be careful to avoid conflicts that can occur when two or more Workflow processes attempt to check out the same document. If you use the same Access Profile for more than one Workflow process, then check outs occur for the same user account. The integration code issues an ID and adds it to the title of the checked out document. The ID locks the document, so only one Workflow process can check out the same document at any time.

**Note:** Do not attach more than one document to a Domino.Doc document.

To integrate Domino.Doc check out with Lotus Workflow, follow these steps:

1. Open the Lotus Workflow Architect.
2. Select the Check-out automated activity, then right-click.
3. Select Properties from the right-click menu to open the Automated Activity Properties box.
4. On the Action tab, specify a value for the parameters described in the following table.

Parameter	Value description
Access Profile	Specify the Access Profile for accessing the Domino.Doc library.
Attachment Field	Specify the field in the Workflow document to which the file of the Domino.Doc document is attached.
Comment	Determine whether or not users can add a comment to the Domino.Doc document when it is checked out.

5. Click OK when done.



### Domino.Doc Check-in

Use the Lotus Workflow Architect to let your users check in Domino.Doc documents from Lotus Workflow. Follow these steps.

1. Open the Lotus Workflow Architect.
2. Select the Check-in automated activity, then right-click.
3. Select Properties from the right-click menu to open the Automated Activity Properties box.
4. On the Action tab, specify a value for the parameters described in the following table.

Parameter	Value description
Access Profile	Specify an Access Profile for accessing the Domino.Doc library.
Attachment Field	Specify the field in the Workflow document that contains the attachment to be checked in.
Remove attachment	Select Yes to remove attachment from Workflow document after check in or select No to keep the attachment in the Workflow document.
Check-in status	Specify whether the document is checked in as a version or a draft.
Comment	Determine whether or not users can add a comment to the new Domino.Doc document when it's checked in.
Check-out again	To perform a check in only, select No. To check out the document after checking it in, select Yes. You can save the document as is while continuing to process it in your Workflow application. Do not select Yes if you selected Yes for the Remove attachment option.

5. Click OK when done.

### Replace matrix for migrating Lotus Workflow 2.1.1 applications

The following table summarizes the changes Lotus Workflow 2.1.1 to 3.x. It lists the Domino.Doc features that you can access from Lotus Workflow and the action type available in each release as well as from the Lotus Workflow Architect.

Domino.Doc Integration Feature	Action Type		
	2.1.1 Agent Automated Activity	LWF 3.x Script Library Automated Activity	Architect special properties values
Search	DD Search	Domino.Doc - Search	N/A
Archive	DD Archive	Domino.Doc - Archive	N/A
Check In as Draft	DD Check In as Draft	Domino.Doc - Checkin	Check-In status as : As Draft Check Out Again = Yes
Check In as Draft and Detach	DD Check In as Draft and Detach	Domino.Doc - Checkin	Check-In status as : As Draft Remove Attachment as : Yes Check Out Again = No
Check In as Version	DD Check In as Version	Domino.Doc - Checkin	Check-In status as : As Version Check Out Again = Yes
Check In as Version and Detach	DD Check In as Version and Detach	Domino.Doc - Checkin	Check-In status as : As Version Remove Attachment as : Yes Check Out Again = No
Check Out and	DD Check Out and Detach	Domino.Doc - Checkout	N/A

## Detach

### Implementing the Domino.Doc New Document feature

The New Document feature lets a Lotus Workflow process create a new document in the Domino.Doc. The new document is based on the main document of the Workflow Binder and is stored in the Domino.Doc File Cabinet and Binder as specified in the Lotus Workflow Architect. You can determine whether or not the attachment from the current document is removed. Removing the attachment is a good idea, so you can avoid having attachments from Domino.Doc and Lotus Workflow that are out of synch. If you want the attachment, you can check out the document and specify that the attachment is returned to the Workflow document.

Because you are limited to having only one attachment in the Domino.Doc document, the New Document feature works only with the first attachment in the Workflow document. Any other attachments are ignored.

To implement this new feature, first update your domdoc.ini file located in the Architect directory with the new settings needed to create the Custom Action interface. To do this, follow these steps:

1. Open the domdoc.ini file in Notepad or other text editor.
2. Paste the following to the end of the file, then save and close the file.

```
;=== Action 5 =====
```

```
[Action 5]
InternalName=DDNewDocument
DisplayName=Domino.Doc - New Document
Category=Domino.Doc
Description=Creates a copy of Main Document in specified file-cabinet and binder in Domino.Doc.
Type=Script
Platform=Notes
ScriptLibraryName=OS Domino.Doc Integration
ScriptLibraryClass=DominoDocIntegration

Param_1_InternalName=DDAccessProfile
Param_1_DisplayName=Access Profile
Param_1_Type=BO
Param_1_DefaultValue=
Param_1_SaveTo=DDProfileOS
Param_1_Description=AccessProfile used for accessing the Domino.Doc library. The Access Profile contains
username and
password information required for log-in into Domino.Doc.
Param_1_Required=yes
Param_1_InputHelp=
Param_1_InputHelpParams=DominoDocAccessProfile

Param_2_InternalName=DDFileCabinet
Param_2_DisplayName=File Cabinet
Param_2_Type=Formula
Param_2_Keywords=
Param_2_DisplayKeywords=
Param_2_DefaultValue=
Param_2_SaveTo=DDFileCabOS
Param_2_Description=Name of Domino.Doc File Cabinet into which the Workflow document will be created.
Param_2_Required=yes
Param_2_InputHelp=

Param_3_InternalName=ddbinder
Param_3_DisplayName=Binder
Param_3_Type=Formula
Param_3_Keywords=
Param_3_DisplayKeywords=
Param_3_DefaultValue=
Param_3_SaveTo=ddbinderOS
Param_3_Description=Name of the Binder into which the Workflow document will be created.
```

Param\_3\_Required=yes  
Param\_3\_InputHelp=

Param\_4\_InternalName=DDDocID  
Param\_4\_DisplayName=Document ID  
Param\_4\_Type=FieldName  
Param\_4\_Keywords=  
Param\_4\_DisplayKeywords=  
Param\_4\_DefaultValue=DDDocumentID  
Param\_4\_SaveTo=DDDocIDOS  
Param\_4\_Description=Field in Workflow document that will contain the ID of the Domino.Doc New Document.  
Param\_4\_Required=yes  
Param\_4\_InputHelp=  
Param\_4\_Hide=yes

Param\_5\_InternalName=DDAttachment  
Param\_5\_DisplayName=Attachment field  
Param\_5\_Type=FieldName  
Param\_5\_Keywords=  
Param\_5\_DisplayKeywords=  
Param\_5\_DefaultValue=Body  
Param\_5\_SaveTo=DDAttachmentOS  
Param\_5\_Description=Field in Workflow document where attachments are located.  
Param\_5\_Required=yes  
Param\_5\_InputHelp=  
Param\_5\_Hide=

Param\_6\_InternalName=DDRemoveAttachment  
Param\_6\_DisplayName=Remove Attachment from WF Document?  
Param\_6\_Type=Keywords  
Param\_6\_Keywords=yes,no  
Param\_6\_DisplayKeywords=Remove attachment,DO NOT remove attachment  
Param\_6\_DefaultValue=yes  
Param\_6\_SaveTo=DDRemoveAttachment  
Param\_6\_Description=Set flag to whether or not remove Attachment from Workflow document after creating the Domino.Doc document.

document.  
Param\_6\_Required=yes  
Param\_6\_InputHelp=

Param\_7\_InternalName=DDVersionOrDraft  
Param\_7\_DisplayName=Check-in Status  
Param\_7\_Type=Keywords  
Param\_7\_Keywords=conversion,consdraft  
Param\_7\_DisplayKeywords=Create and Check-in As version,Create and Check-in As draft  
Param\_7\_DefaultValue=conversion  
Param\_7\_SaveTo=DDVersionOrDraftOS  
Param\_7\_Description=Create new document and Check-In as a Version or a draft.  
Param\_7\_Required=yes  
Param\_7\_InputHelp=

Param\_8\_InternalName=DDAction  
Param\_8\_DisplayName=NewDoc  
Param\_8\_Type=  
Param\_8\_DefaultValue=NewDoc  
Param\_8\_SaveTo=DDActionOS  
Param\_8\_Hide=yes  
Param\_8\_Description=This is just an internal Field and will be hidden...

Next, update your Lotus Workflow application template with the necessary code to create the document in Domino.Doc. Follow these steps to update your Lotus Workflow Application template/database. The code that you need is available in a sample database from the [Sandbox](#).

1. Open the lwf\_dominodoc.nsf database in Domino Designer.
2. Copy the OS Domino.Doc Integration script library to your Lotus Workflow Application template/database.
3. Select the Prohibit design refresh or replace to modify option for the new Script Library, so an older version of the template cannot replace the script.

### Configuring the Domino.Doc New Document feature

Use the Lotus Workflow Architect to configure the New Document feature for Domino.Doc. Follow these steps.

1. Open the Lotus Workflow Architect.
2. Select the New Document automated activity, then right-click.
3. Select Properties from the right-click menu to open the Automated Activity Properties box.
4. On the Action tab, specify a value for the parameters described in the following table.

Parameter	Value description
Access Profile	Specify an Access Profile for accessing the Domino.Doc library.
File Cabinet	Specify the name of Domino.Doc File Cabinet into which the Workflow Binder is created.
Binder	Specify the name of the Binder into which the Workflow document is created.
Attachment Field	Specify the field in the Workflow document that contains the attachment to be checked in.
Remove Attachment	Select Yes to remove attachment from the Workflow document after check in. Select No to keep a copy of the file attachment in the Workflow document.
Check-in status	Determine whether the document is checked in as a version or a draft.

5. Click OK when done.

### Conclusion

As we've shown, integration between Lotus Workflow and Domino.Doc has become much easier using the Lotus Workflow Architect. Standard actions, like check in and check out, take little time to complete. If you want to implement the New Document feature, this article provides all the code and steps you need to update your existing Lotus Workflow applications. In addition, we also updated two Lotus Workflow sample processes, Web Publishing and Expense Report, with the new features that we discussed in this article. You can download the new samples from the [LDD Sandbox](#).

We hope that this article has provided you with the information you need to begin or upgrade your Domino.Doc and Lotus Workflow integration.

### ABOUT THE AUTHOR

Luciano Resende is a PCLP Developer, and has been an Advisory Software Engineer in the Knowledge Management Products Group at IBM Software Group for almost two years. He was relocated from Lotus Professional Services in Brazil, where he worked as a Senior Consultant for eCommerce and ERP Integration projects.